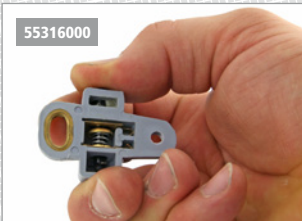
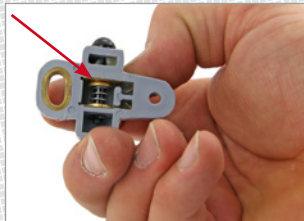


Switch Technology



Vespa brake light switch „shutter“. Here you can see the state when the pedal is not operated - no power flows.



When the brake pedal is pressed, the switch is released, the contact is shut, power flows = the brake light lights up.



Vespa brake light switch „opener“. Installed state, contact is shut. When non-operated, the power flows through the switch to mass.



When the brake pedal is operated, the switch is released, the contact opened, mass contact is made = the brake light lights up.

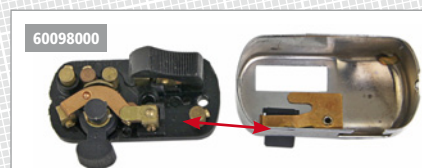
Brake lights switches and horn switches exist as so-called „opener“ or „shutter“ switches. When operated, the contact is „opened“ or „shut“. We state the type of construction for all switches. You can see what we mean from the pictures on the left and below.



„Opener“ horn switch. The contact opens when the horn is pressed, the horn has mass contact and hoots.



If the horn button is released, the contact shuts again, the mass contact disappears, the horn is silent.



„Shutter“ horn switch. The contact shuts when the horn presses, power flows.

